

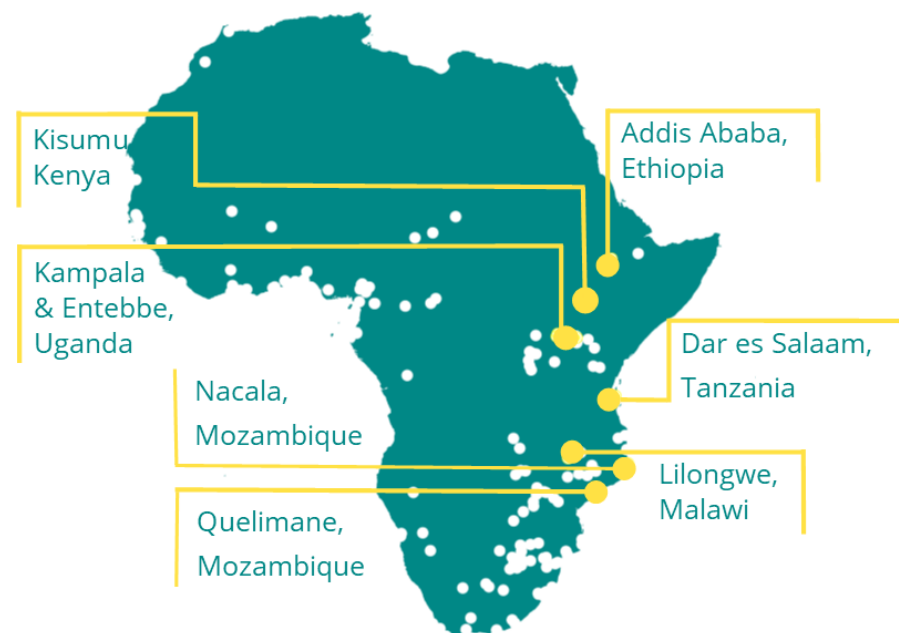
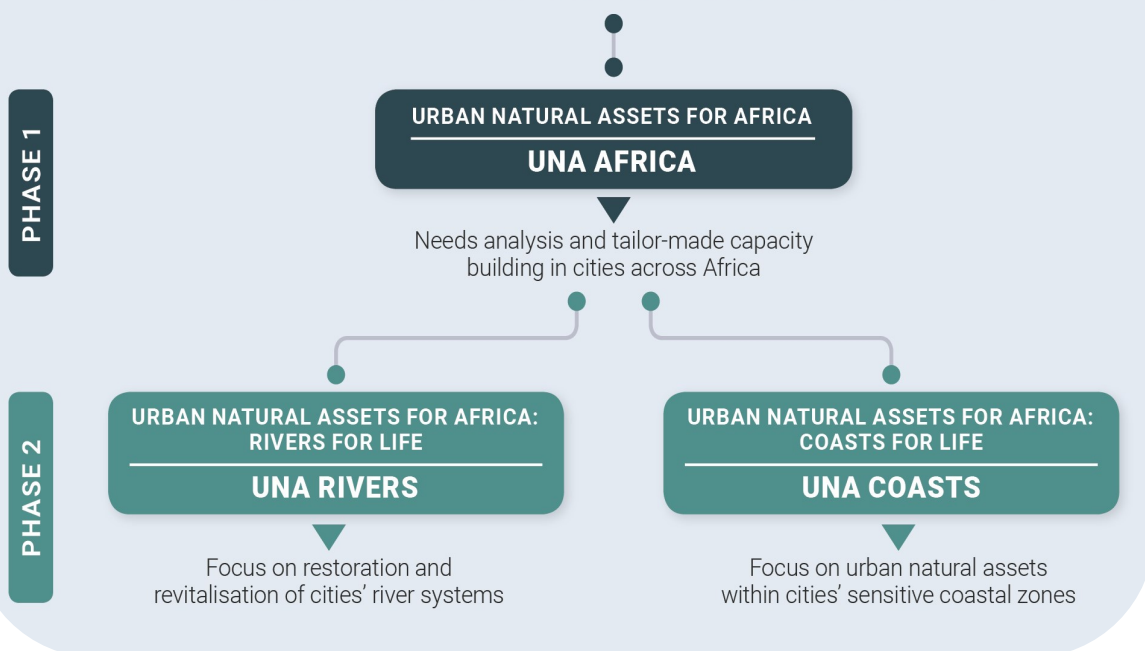


# URBAN NATURAL ASSETS FOR AFRICA (UNA)

Building climate resilience through alternative planning & nature-based solutions at multiple governance levels

## MAIN ACHIEVEMENTS

### URBAN NATURAL ASSETS FOR AFRICA (UNA) PROGRAMME



## IMPACT PATHWAYS

- Cutting-edge tools and methods developed for
  - ⇒ Gaining an in-depth understanding of urban decision contexts
  - ⇒ Analysis of challenges, needs, opportunities and solutions for improving natural asset management in African cities
- Enabled co-production and transdisciplinary processes, advancing mainstreaming in practice
- Enabled institutional (culture) transformation in 8 African cities
- Built capacity of over 2000 African stakeholders, complimented through providing appropriate natural asset information to decision makers to harness nature for resilience
- Localised 3 key international frameworks, Paris Agreement, Sendai Framework and the Strategic Plan for Biodiversity 2011-2020, in African cities, influencing these frameworks with on-the-ground knowledge and experience as well as ensuring alignment and synergies between these frameworks
- Tested new concepts to assess local applicability, as well as influence the theoretical and practical development of new knowledge areas, e.g. urban tinkering
- Up and out-scaled UNA developed methods and tools via:
  - ⇒ ICLEI Africa and ICLEI's Cities Biodiversity Center programmes and projects
  - ⇒ Partnering with UNHabitat, Robert Bosch Stiftung, WWF, UNDRR and others for alignment and expansion

Implementation of **10** locally appropriate on the ground activities (with a specific focus on community-based art and culture activation & connecting people/urban communities with urban nature)

Over **345** tweets

Over **80**

video interviews to document change enacted by UNA

UNA showcased at **over 75** high-level events & **over 25** global webinars

Close to **40** articles/case studies/blogs written

- Waste management in Lilongwe through
  - ⇒ Awareness and capacity building of **over 2000** community members
  - ⇒ Training of **12 women** in composting in order to improve human well-being through livelihood creation
  - ⇒ Generating **over 15 tons of compost** through collecting over 6 tons of organic waste from the degraded river system
- Addressing flooding and erosion challenges through re-planting of indigenous plant species on the banks of a severely degraded portion of the Lilongwe river
- Improving the quality of life via a multi-functional ecological corridor in central Addis Abba
  - ⇒ **Over 200** indigenous seedlings planted
  - ⇒ **300m<sup>2</sup>** bike lane implemented
  - ⇒ Trained **100 unemployed youth** and **400 women** in the area in relevant business skills
- Hit song produced by Malawian pop star, with over **6000 downloads**, galvanizing community action
- Transforming dreary urban landscapes via impactful murals in the busy streets of Dar es Salaam: Showcasing the value of nature in visually appealing ways
- Piloting new socio-ecological approaches to urban development control: Giving national government the data they need to roll out new ways of doing things
- Improving mental health by bringing green spaces into neighborhoods where children the need the space to play
- Inspiring the youth to value natural assets through education and art campaigns
  - ⇒ **8 schools, 12 teachers** and **over 300 youth** exposed to nature-based solution implementation through the THRIVE mobile application
- **5 schools** and **over 50 youth** engaged in coastal natural asset awareness raising

Developed a community

Strategically linked to **14** networks

Over **2000** People actively included in UNA activities

Supported the exchange & co-production of knowledge through **over 80** dialogues between key stakeholders in participating cities

Over **20** online trainings, capacity building dialogues & engagements

**2** city-to-city learning exchanges

Networking

Learning

Reflection

Capacity Building

Knowledge sharing

Knowledge generation

Relationship building

Integral to the process of making transformative change

African cities face numerous challenges and often have very unique and dynamic contexts. Development challenges are exacerbated by the rural-urban continuum of African cities. Although fast growing, not all UNA cities are primary/typical.



Jessica.kavonic@iclei.org  
Iclei.africa@iclei.org

WWW

<https://cbc.iclei.org/urban-natural-assets/>



@ICLEICBC / @ICLEIAfrica  
#UNARivers / #UNACoasts